
HOUSTON CHAPTER

ASPE Newsletter

Chartered July 10, 1968

March 2024

Houston, Texas



Houston ASPE Board of Directors



Jaime Cruz
Chapter President



Billy Turcios, CPD.
VP Technical



Curtis Dady
VP Membership



Dave Cropper
VP Legislative



Chris Tuey
Administrative Secretary



Geoffery Moore
Treasurer




Hannah Harris, P.E., CPD
Corresponding Secretary

March Technical Meeting!



David Olson

— **Event Speaker**

 **March 6th, 2024**
11:30 am – 1:00 pm
Dukessa Event Center
2840 Chimney Rock Rd,
Houston, TX 77056



**Domestic Hot
Water Heat
Pumps.
Considerations
and applications**



REGISTER TODAY AT
WWW.ASPEHOUSTON.COM

President



ASPE Houston Newsletter
March 2024

Greetings, ASPE Family! By now, you've likely enjoyed a few thrilling rodeo events, and carnival rides, and indulged in some delicious BBQ. I want to express my heartfelt gratitude to each of you for your patience during our February general meeting, where we had to accommodate extra tables to accommodate the overwhelming success and turnout. Your understanding and support are truly appreciated. In addition, I want to thank Angela Vinson with Victaulic for doing what you did! Many thanks to Billy Turcios as always for planning the monthly meeting.

Looking ahead in March, we will have our regular scheduled chapter meeting on March 6th at Dukessa. Please refer to Billy's article for all the details of our next meeting. Please note, that there won't be an April General meeting as the ASPE Product show seminars will take its place. With things steadily ramping up as we draw closer, anticipation is building. However, if anyone is interested in offering assistance, please contact Greg Salter at 832-202-4032. I'm sure they may be able to utilize new volunteers.

We're always open to fresh ideas for future chapter functions or meeting topics. Please don't hesitate to reach out to any of the Board of Directors (BOD) members with your suggestions. As you're aware, we're committed to offering our members engaging, educational, and occasionally even entertaining chapter meetings. Your input is invaluable in helping us achieve that goal. If anyone is interested in getting involved with any of the events that we have in store for this year, please don't hesitate to reach out to me via email or give me a call. Thank You!

Wishing you all the luck of the Irish and a pot of gold at the end of your rainbow this St. Patrick's Day! Sláinte!

Thanks,
Jaime Cruz
President

ASPE POLOS TO BE RAFFELED OFF AT MARCH MEETING!



AMAZING TURNOUT IN FEB.





VP Technical



Dear ASPE Houston Chapter Members,
March 2024,

Yeehaw! It's that time again – dust off your boots and grab your cowboy hats because it's time for some rodeo action! I hope everyone is as excited as I am for the rodeo season to kick off. The thrill of bull riding, barrel racing, and all the rodeo festivities are about to begin, and I can't wait to witness the adrenaline-pumping performances. On a different note, a big shoutout to Matt Lunn for delivering an outstanding presentation last month on temperature control valves for hot water distribution. His insights were invaluable, and it's always great to learn from experts in the field. Now, let's saddle up for some rodeo fun and make this season one to remember!

In addition to the exciting updates regarding the Houston rodeo, we are thrilled to announce that we are swiftly approaching our highly anticipated 2024 ASPE product show, set to take place in less than a month! Our dedicated product show committee is diligently putting the finishing touches on all aspects of the event, ensuring that every detail is meticulously planned for an unforgettable experience. Stay tuned as we eagerly anticipate the release of the seminar schedule, packed with informative sessions and invaluable insights into the latest advancements in our industry. Get ready to immerse yourself in a showcase of innovation and expertise at this year's ASPE product show!

We are thrilled to announce that in March, we will be returning to our regular monthly meetings at Dukessa. Our featured speaker will be Mr. Olson, who will delve into the intriguing topic of "Heat Pump Water Heaters." Join us for an informative session as we explore advancements in this critical aspect of our industry. Looking forward to your presence at this engaging event!

All technical speaker slots for our upcoming 2024 ASPE product show are full at this point. However, you can still contact me with suggestions regarding speakers for our upcoming general meetings. Bturcios@PBSengineers.com, or at 832-229-7819

Thank you,
Billy Turcios
VP Technical



Welcome new members: Kendra Barnes (REHAU), Don Childers (DJC Sales Company), Shyam Kumar, Alde Plata (TD Industries), Amando Plata, Remington Quirante (Mifab), Shannon Spear (Shannon Spear), Chris Tubb (Mammoth Solutions), Richard Valdez (KAN Therm USA)

Chapter	Feb-23	Feb-24	% change
Arkansas	37	49	32%
Dallas/Ft. Worth	227	270	19%
Central Texas	120	140	17%
St. Louis	116	130	12%
Kansas City	118	125	6%
Chicago	272	286	5%
Houston	224	234	4%
Wisconsin	158	159	1%
Omaha	76	75	-1%
Oklahoma	72	69	-4%
Central Illinois	32	30	-6%
Minnesota	159	148	-7%
Lubbock High Plains	11	10	-9%
Region 5 Total:	1622	1725	6%

The Houston Chapter Board of Directors appreciates help from each of you for recruiting colleagues and contacts to the ASPE Houston Chapter!

**Curtis Dady
VP Membership**

Member Benefit Tips

BOOST YOUR INDUSTRY VISIBILITY

Demonstrate your abilities to lead and boost your industry visibility by volunteering to join your Chapter Board of Directors or apply to join the Society Board of Directors. Employers, clients, and coworkers respect and look up to ASPE Chapter and Society Officers. Without our leaders, we would not have a Society; it's worth the work.

SPECIAL-INTEREST GROUPS

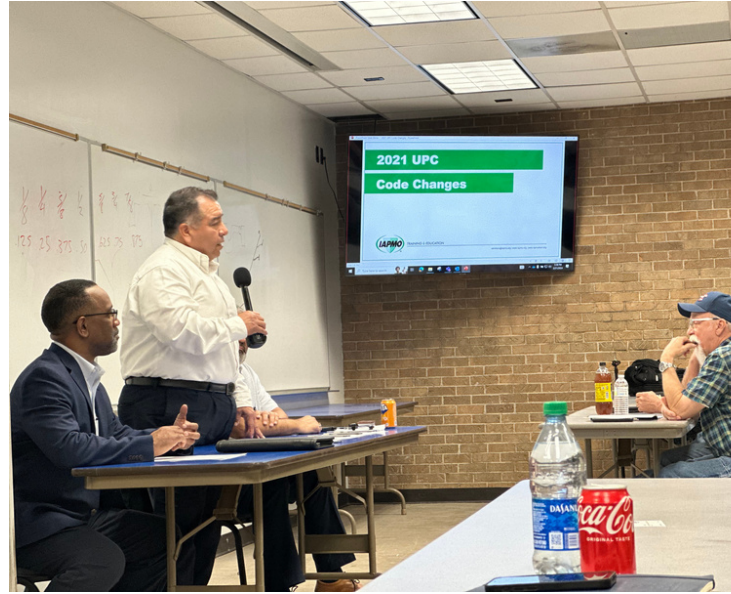
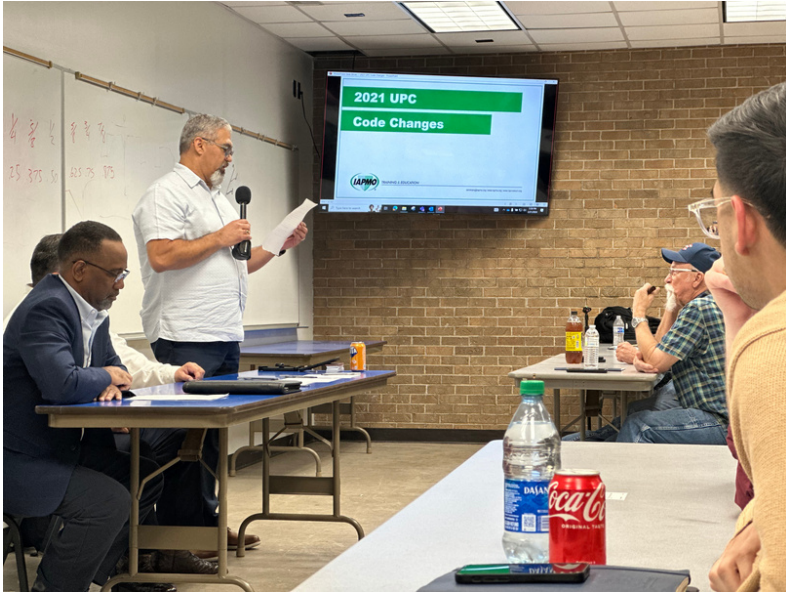
ASPE Young Professionals (AYP) is designed for young industry professionals looking to meet with peers to share experiences, exchange ideas about the plumbing design industry, and network with other Chapter members. The focus of AYP is to help young plumbing engineers, design professionals, and practitioners establish contacts and further the mission of the Society. ASPE members 35 years old and younger are all included in this special-interest group.

The core mission of the Women of ASPE (WOA) is to engage, retain, and advance women in the plumbing design industry, through education, leadership development, and networking opportunities. WOA is committed to bringing together women and assisting them to achieve their professional and personal goals.

MEET POTENTIAL CLIENTS/MEMBERS

If you are an Affiliate member, in sales, who steps up and takes on a membership role, you are in a unique position to promote ASPE and your company. Your leadership role is a valuable way to place yourself in front of prospective clients and members. Talk to your Chapter Board of Directors and see what you can do to promote yourself and ASPE.

2021 UPC Update with COH





DIAMOND



GOLD



SILVER



BRONZE



Education is at the core of what we do at ASPE. As I write my first article of 2024, I will reflect on a 20-year history of ASPE interactions, experiences, and life-altering events. In this article, I want to first make you familiar with a term that I coined many years ago: *conduit of success*. I use this term to describe how I see ASPE interacting in our members' lives.



Education Report

by Bryan L. Hutton, CPD, MBA
2022/2024 ASPE VP, Education

What Is the Conduit of Success?

I have been around piping systems my entire life. As far back as I can remember, living in a small area known as "Huttonville" in Oklahoma on a farm, with cattle, grain, dogs, chickens, rabbits, and an old milk cow with a bell around her neck, we had work that needed to be done. Hard work and fortitude were instilled in me from a young age. The constant pursuit of perfection has been a part of my life as long as I can remember. Some may look at this viewpoint as being a critical person or a person who critiques constantly. Maybe, but for me, I try to look at this as a way to continuously self-reflect and get better.

For some reason, as I look back at my childhood, I remember that we had an old water well that provided us water in our front yard area, and I have a fond memory of having to replace the piping that was bored into the ground. I think I remember it so vividly because being a young lad of small stature, I had to take a bath in a 5-gallon bucket because the well water was not accessible due to the piping failure. You might say that the installation of safe, reliable piping systems was embedded in my mind from a young age.

Fast-forwarding a few years, I have a memory of building a large pole barn in which we ran electricity through a conduit that we had to trench with shovels and bury deep enough to be below the frost line. We used piping to move materials from one place to another to achieve our objectives. In college, we learned about dispersion models and absorption rates, diffusion rates, and the like. If we think about maturation, we all evolve in our own time, moving from the ignorant or unknowing into the experienced and well-educated. The question is always how long does it take us to mature? How long do we stay in the incubator and come out as CPDs? How do we shorten the gestation period?

I have an answer for you: ASPE! You see, I use the term *conduit of success* to describe how we can bring together the designer, engineer, contractor, code official, code body, and owner into a single conduit where we mature together, coming out the other end with a highly desired outcome. We can improve the construction process, resulting in a superior finished product. Not only are the finished products superior, but we also advance our knowledge and capabilities in the process. Welcome to the Conduit of Success.

Conduit of Success: Networking

The conduit of success provides a great networking opportunity for us all. Many people have influenced me over the years and helped me to better understand how I can be of service. Make no mistake about it, volunteering to spend hours of your time working for a nonprofit organization is indeed a service. Thank you to all the people reading this article who have made that same choice to serve. I want everyone to understand that our Society will continue to stand the test of time as we continue contributing as a team. My journey as an ASPE member started some 20 years ago in Fort Worth, Texas. We will talk more about that in another article. The opportunities to build networks around our profession provide us an excellent opportunity to meet new friends, find mentors, become mentees, and connect with experts who can make our designs more efficient, saving our companies money while growing our knowledge base. I have a lot more to say on this, but for today I am going to move over to my next area of importance, education.

Conduit of Success: Education

As the VP of Education, I work with Staff and our Education Committee to help our Society move forward with innovative educational opportunities that provide growth for our members. An education is something that once obtained can never be taken from you. The American Society of Plumbing Engineers is the premier source of education in the plumbing design community.

Over the past year, we have been working to build our Education Committee with fresh voices, fresh ideas, and energy. If I told you that since July 1, 2023, our Chapters have conducted 210 educational monthly meetings or events, would you believe me? If I told you that more than 4,441 ASPE members participated in those meetings, would you believe me? If I told you that more than 1,400 nonmembers participated in those 210-plus meetings, would you believe me? The reality is that we have exceeded these numbers! Education is one of the major regions that many decide to join our Society. We must continue to bring forth great topics for our members.

So, we talked about networking as well as education today. This is Volume 1 of many that we expect to share with you over the coming months and years. I have found it most rewarding to help ASPE members continue to grow personally and professionally as they make their way through our Conduit of Success. I am open to mentoring, coaching, and being a sounding board for our ASPE community. I look forward to more interactions with each of you as we work together on our common cause, ASPE.

A big "thank you" to everyone who took the time to read this article.

As we created Volume 1 of my articles, I thought it fitting to introduce [Volume 1 of the ASPE Education Crossword Puzzle](#). Luther Thevenin, CPD, MCPPO, is one of our many talented contributors on the ASPE Education Committee, and he has taken the time to put together some great puzzles for our ASPE community. So, please take some time and complete the crossword puzzle. The answers will be posted in our next article.

Until next time...

What is ASPE?

The **AMERICAN SOCIETY OF PLUMBING ENGINEERS** (ASPE) is the only organization dedicated to promoting the plumbing engineering profession to both enhance career opportunities for our members and ensure the health, safety, and well-being of the public through the design of safe plumbing, drinking water, and sanitation systems.

WHAT WE DO



Provide continuing professional education programs



Publish design manuals, tools, and standards



Host conferences, tradeshows, and networking events



Certify professionals skilled in plumbing system design



Promote safe and sustainable water and sanitation systems



Represent the industry in local and national government



Help develop safe plumbing and building codes and standards



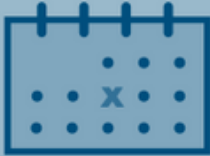
OUR MEMBERS

Our members are individuals working in various professions related to plumbing system design.

← What Is Plumbing Engineering?

Plumbing engineering is a vital part of the design/build construction process. Plumbing engineers use the principles of fluid flow with engineering calculations to design plumbing systems that transport fluids such as water, wastewater, natural gas, and rainwater throughout buildings.

BY THE NUMBERS



Founded in

1964



Number of Members Worldwide

6,500+



13

Elected Board Positions



66

Local Chapters

20+

Technical Publications



2

Special-Interest Groups for Young Professionals and Women

3

Professional Certification Programs



10

Staff Members



INDUSTRY PARTNERS

To achieve our goals, ASPE collaborates with the following organizations:

American Backflow Prevention Association

National Institute of Building Sciences

ARCSA

NSF International

ASHRAE

Plumbing Efficiency Research Coalition

ASSE International

Plumbing Industry Leadership Coalition

Canadian Institute of Plumbing & Heating

Plumbing Manufacturers International

CSA Group

United Association

IAPMO

Water Quality Association

International Code Council

World Plumbing Council

HOW YOU CAN GET INVOLVED

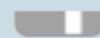
Contact a Chapter

Join Today!



Our Chapters host monthly meetings, golf outings, tradeshows, seminars, picnics, baseball outings, and more fun networking events to help local professionals connect.

Connect with Us






ANNUAL PRODUCT SHOW

Wednesday, April 3rd, 2024 | 4:30 to 8:30 P.M.

SAM HOUSTON RACE PARK | 7575 North Sam Houston Parkway | Houston, TX



Food, drinks, parking,
and admission are included as well
as many great door prizes!

Starting at 5 P.M.:

- Door Prizes every 30 minutes
(while they last)
- Winners will receive text
- **BIG** Grand Prize at 8:30 P.M.

| PREREGISTER TO EXPEDITE ENTRY

For more information contact
Product Show Chairman: Greg Salter
at gsalter@pepcosales.com
or 832-202-4032



CERTIFIED IN PLUMBING DESIGNSM

CERTIFIED IN PLUMBING DESIGN (CPD), administered by the American Society of Plumbing Engineers (ASPE), is the only international certification program specifically for engineers and designers of plumbing systems. Professionals who have the CPD credential are considered to have the highest level of skills in the design and specification of plumbing systems.

EARNING & MAINTAINING THE CPD CREDENTIAL

Am I eligible?

Route 1:

4 year engineering degree + 4 years of work experience designing plumbing systems

Route 2:

8 years of work experience designing plumbing systems

Other eligibility options:



Current CPDT certification counts toward 1 year of experience

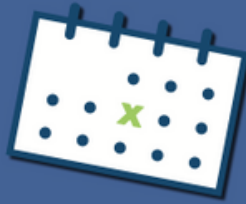


PE license counts toward 2 years of experience

When can I take the exam?



The exam is held **annually** in the spring



Registration typically opens in December prior to the exam date



You can register online at education.aspe.org

Where do I take the exam?

The CPD exam is held at **online testing centers** around the world



Did I pass or fail?

Scores are **mailed** 6 to 8 weeks after the exam



Maintaining your CPD credential

- ✓ You must earn 24 hours of continuing education every 2 years
- ✓ You can find recertification details at aspe.org/education-credentialing/cpd/recertification/

For more info:

aspe.org/education-credentialing/cpd/
or email certification@aspe.org





2024 CPD Exam Dates: April 15–26

The CPD Exam

To be eligible to take the CPD Examination, a candidate must possess:

Full ASPE membership or previously received approval to sit for the exam starting November 22, 2021; or

A minimum of four years of experience in a position of responsibility for the design of plumbing systems and possess a baccalaureate degree in a field related to engineering; or

In lieu of an accredited degree, a candidate may substitute up to an additional four years of practical experience in the design of plumbing systems, for a total of eight years, or be granted a credit of one-half year of practical experience for each full year of education in an accredited curriculum related to plumbing engineering.

CPDT Certification counts towards 1 year of experience.

Here's more about the CPD Examination:

[General exam FAQs](#)

[Exam open book policy FAQs](#)

[2023 CPD Bulletin](#)

The exam is [remote proctored](#).

[CPD eligibility form](#)

The 2024 CPD Exam fees are:

ASPE Members \$450

Nonmembers \$675



CPD REVIEW CLASS



Instructor: Donald Taylor

CPD REVIEW CLASSES:

MARCH 2ND AND 3RD

10 AM – 3 PM (VIRTUAL)

MOCK EXAM: MARCH 30TH

10 AM – 3 PM (VIRTUAL)

REGISTER TODAY

Still Time To Register!

Contact Donald Taylor

at donald.taylor@crbgroup.com or

Call 405.406.0548

WHAT IS A Plumbing Engineer?

PLUMBING ENGINEERS are a vital part of design/build construction teams for residential, commercial, and industrial facilities. They interact with other construction trades to provide building owners with efficient, functional, and sustainable plumbing systems that protect the health, welfare, and safety of the public and prevent environmental contamination.

WHAT DO PLUMBING ENGINEERS DO?

PLUMBING ENGINEERS use the principles of fluid flow along with engineering calculations to design plumbing systems that transport fluids and gases throughout buildings. Those systems include:

$$S = \frac{\text{rpm}\sqrt{Q}}{\text{NPSH}^{0.75}}$$
$$x 2.31 - h_f L_f + \frac{(P_B - V_p)}{\text{Specific gravity}}$$



Domestic water systems



Wastewater



Fuel gas



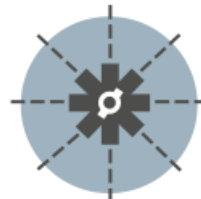
Medical gas & vacuum



Compressed air



High-purity water



Fire suppression



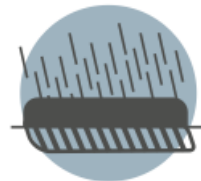
Chemical waste



Rain & stormwater systems



Venting



Site & building drainage



Water efficiency

WHAT DOES THE PROFESSION ENTAIL?

"The old adage that 'anyone can do plumbing' does not hold water anymore. A diversified and accomplished plumbing engineer is a valuable commodity in the design/build market."



PLUMBING ENGINEERS are highly skilled individuals involved in many different aspects of the design/build process, including:

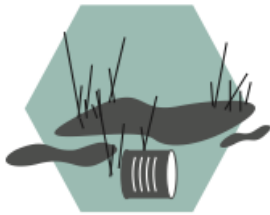
PLUMBING SYSTEM DESIGN	COMMISSIONING
PROJECT MANAGEMENT	CODE & STANDARD EXPERTISE
CONSTRUCTION ADMINISTRATION	FORENSIC & SUBSURFACE SYSTEM EVALUATION
BUILDING INFORMATION MODELING (REVIT)	COST ESTIMATION
PRODUCT & SYSTEM SPECIFICATION	PROBLEM SOLVING

PROTECTING PEOPLE & THE ENVIRONMENT

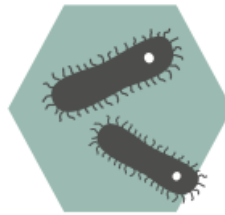
PLUMBING ENGINEERS help eliminate many of the threats that sicken people and harm the environment on a global scale by:



Delivering safe drinking water & sanitation systems



Combating groundwater contamination & depletion

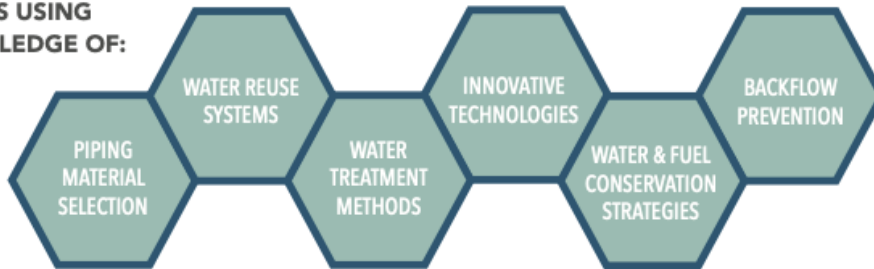


Preventing waterborne diseases



“Through their designs, plumbing engineers affect every life.”

THEY DO THIS USING THEIR KNOWLEDGE OF:



HOW TO LEARN MORE

The American Society of Plumbing Engineers (ASPE) is the only association dedicated to promoting the plumbing engineering profession and helping plumbing engineers advance in their careers. Our members have a wealth of knowledge and experience and are ready to help others learn more about the industry.



To discover ASPE and find local contacts, visit:

aspe.org



Connect with Us



Special Interest Groups

Women
of ASPE®



Shannon Yancey

We are pleased to announce that Shannon Yancey with Caleffi North America has agreed to take on WOA Chair for our Houston Chapter. We are excited to have her part of the team and she will have some exciting events lined up soon for our Women of Aspe!

ASPE
YOUNG
PROFESSIONALS



Joe Brewers

The ASPE Young Professionals (AYP) special interest group is designed for young industry professionals looking to meet with peers to share experiences, exchange ideas about the plumbing design industry, and network with other chapter members. The focus of AYP is to help young plumbing engineers, design professionals, and practitioners establish contacts and further the mission of the Society. ASPE Members 35 years old and younger are all included in this special interest group.

AYP/WOA WINE GARDEN HAPPY HOUR

March 7 / 4:30 - 6:30 p.m.

Champion Wine Garden

Houston Rodeo, just outside NRG Stadium



Please join ASPE AYP and WOA for a wonderful evening in the wine garden at the Houston Rodeo. Food and beverage will be provided free of charge.

You must RSVP for this event. Admission to the grounds will be provided by ASPE.

Brought to you by:

ASPE
YOUNG
PROFESSIONALS™

Women
of
ASPE

CASPE
American Society of
Plumbing Engineers™
HOUSTON

RSVP to:

Joe Brewers

JBrewers@SpecTexUSA.com

and

Shannon Yancey

Shannon.yancey@caleffi.com

Sponsored by:

TEXAS
AIRSYSTEMS

PEPCO
SALES & MARKETING

**ASPE
YOUNG
PROFESSIONALS**

**KIRBY
ICE HOUSE**
"A Neighborhood Pearl."



Good Times!



Message from Brianne Hall, PE, CPD | ASPE VP Legislative | ASSE International Region 8 Director

NFPA 99-2024 is available and includes the language below referencing ASSE 6060 - Medical Gas Systems Designer. Thank you to those who supported the development of the professional qualification standard, supported the training, the exam development process and supported the inclusion within NFPA 99.

"5.1.3.3.2 Design and Construction

5.1.3.3.2.1 Medical gas and vacuum systems shall be designed by one of the following:

- (1) A party technically competent and experienced in the field of medical gas and vacuum system design and meeting the requirements of ASSE/IAPMO/ANSI 6060, Professional Qualifications Standard for Medical Gas System Designers
- (2) A party deemed technically competent through other qualification(s) deemed sufficient by the health care facility's governing body"



Did You Know ASSE 6060 Will Be Required in NFPA 99?

In August, the NFPA Standards Council approved the 2024 edition of NFPA 99: Health Care Facilities Code, which includes a new stipulation for medical gas system designers to meet the requirements of ASSE 6060. To help you stay ahead of the curve, ASPE now offers an online medical gas training course in partnership with MedGasCards.com. The self-paced, 32-hour course fulfills the training requirement for ASSE 6060 and also offers 1.2 ASPE CEUs. You can start your training at MedGasCards.com.



March

Edwin Aguilar PE, CPD

Donald Billings

Sterling D. Bowman

Zach Bukowski

Marisol Carranza

David L Gassman P.E., CPD

Hannah Elyse Harris P.E., CPD

Robert Wayne Lemon

Daniel Edward Loy

Alamex Martinez CPDT

Elbert F. McKinlay

Mark G. Milstead

Roel Salazar Munoz

Shellie Natho

Jeffrey L. Perry CPD

Melvin Pipes

TONY RESENDEZ

Greg Salter

JEFFREY ALFRED SERRANO P.E.

Donald A. Taylor CPD, GPD, ASSE 6060, FASPE

Mark Christian Tench

Shane Roland Wisenberg

Robert Yoakum GPD, LEEP AP, CPD

Kyle Young

BRADFORD WHITE
WATER HEATERS
Built to be the Best

MORE PROTECTION THAN EVER

Vitraglas® is an exclusive enamel tank lining that provides unsurpassed protection from the corrosive effects of water. Microban® antimicrobial technology provides additional product protection by helping to prevent the growth of bacteria, mold and mildew on the surface of the tank lining.

Bradford White Microban® specifications can be accessed in the following locations:

- BSD Speclink to get Microban® integrated into the platform.
- MasterSpec to get Microban® integrated into the platform.
- Specification section on the Bradford White website (scan the code to access).

VITRAGLAS + **MICROBAN**

PMI
Sales and Marketing, Inc.

Curtis Dady
(346) 287-6939
CurtisD@PMIreps.com

Microban® antimicrobial product protection helps prevent the growth of bacteria, mold and mildew that may affect the product. The built-in antimicrobial properties do not protect users or others from disease-causing organisms. Microban® is a registered trademark of Microban Products Company. ©2022, Bradford White Corporation. All rights reserved.

CircuitSolver
A ThermOmegaTech® brand

Thermostatic Balancing Valves
for Domestic Hot Water
Recirculation Systems

Automatically and continuously maintain the right temperature of your fixtures

CHOOSE YOUR PERFECT FIT

PMI
Sales and Marketing, Inc.

(713) 674-8735
www.pmiireps.com

WWW.ALBERTSTERLING.COM

ALBERT STERLING & ASSOCIATES, INC.

Houston
(713) 780-1600

THE FIRST CONCEALED
IN THE WALL
ELECTRIC TANKLESS WATER HEATER

SAN ANTONIO
(210) 349-9828

CHRONOMITE
Since 1966
Electric Tankless Water Heaters

BENEFITS

- Provides bathroom flexibility
- Can serve single or multiple lavatories
- Available with prefabricated Disconnect Switch
- Matches bathroom walls for a seamless look
- Provides vandal resistance for the heater

CODE COMPLIANCE

- Prevents legionella by instantly heating the water
- 99% EF with zero gas emissions
- Provides ADA compliance for lavatories
- Available with integral ASSE 1070 (CM Model)
- Meets energy code by supplying hot water in under 6 seconds

The Comprehensive Approach to Fire Protection.

The most important component to fire protection is security. This security is gained through the knowledge that each and every step of any fire protection project is always handled with the utmost care and given the utmost attention. This security comes with the combined experience of 100 years of specialty fire detection & suppression offered to all the clients of Detection & Suppression International, Ltd.

DESIGN * DEVELOPMENT * MARKETING * INSTALLATION * SERVICE
FEASIBILITY STUDIES * CONCEPTUAL DESIGN * SPECIFICATION GUIDES
PRICING * FORMAL DESIGN AND SUBMITTALS * PROCUREMENT
TESTING * SYSTEM CERTIFICATION * EMPLOYEE TRAINING

CHRISTOPHER B. ENNIS, CET
ce@firedsi.com

P. MARK THOMASSON, CET
mt@firedsi.com

Detection & Suppression International, Ltd.
5829 West Sam Houston Parkway North, Suite #1111
P.O. Box 41302 • Houston, Texas 77041-1302
Phone: 832-467-9090 • Fax 832-467-9091
Visit us on the web at: www.FireDSI.com

DSI
DETECTION * SUPPRESSION
INTERNATIONAL, LTD.
World Leader in Fire Protection

Career Opportunities



Infinity MEP+S is looking for **Plumbing Designers** to join our team in Houston! If you're interested in becoming a part of our team and building a career, we want to talk to you!

At Infinity, we are committed to building a culture of growth and development within our team. Our employees are our greatest asset, and we strive to give them the resources and training to reach their full potential.

Check out our job post for more information!

Or send resumes to nbadke@infinitymep.com

Spread the word and connect us with anyone that is looking for this new opportunity!



Wylie Engineering is hiring! We are looking for Plumbing Designers with experience in building construction plumbing and fire protection systems design. Come join our dynamic team in our Houston office! Wylie Engineering has a strong history of serving the architectural and construction community in Houston, Austin, and across Texas – currently celebrating our 35th anniversary! Our portfolio includes diverse and interesting projects ranging from healthcare, lab, high-rise residential, commercial office, higher education and many more.

Primary areas of responsibility include providing design concepts for plumbing and fire protection systems, coordinating design with project management and other disciplines, and production of system designs using AutoCAD & Revit.

Certified Plumbing Designer (CPD) is preferred, but not required.

Please submit resumes to HR@wylieeng.com.

ASPE

Mentoring Program

This program, which is available to all members of the Society, has been designed to connect ASPE members who have a particular skill set (mentor) with individuals (mentee) who are searching to acquire the same skills to develop and make progress toward their personal and professional goals.

Who Is a Mentor?

A mentor is someone who can help the mentee develop skills for success and long-range career planning, is able to be a good listener, is willing to share experiences and views, is willing to commit time and effort, provides an "open door" to questions and problems, points out both strengths and opportunities for improvement, and has a vested interest in the growth and development of their mentee.

Benefits to the mentor:

- Satisfaction in helping someone mature, progress, and achieve goals
- Meeting and sharing experiences with other mentors
- Personal ongoing support to help the mentee succeed
- Personal fulfillment through contribution to the Society and the individual

Who Is a Mentee?

Having a mentor can contribute to a successful and satisfying career. Without a mentor, that learning occurs mostly through trial and error. With a mentor, even experienced professionals can benefit from the experiences and expertise of someone who has withstood the trial and can help the mentee avoid the mistakes. Similarly, those new to the industry will discover that being a mentee shortens the learning curve for acquiring the skills and knowledge most critical to a fruitful career.

Benefits to the mentee:

- Discover new talents about yourself
- Career satisfaction
- Expand your personal network
- Maximize your strengths

connect.aspe.org



GO TEAM

CUSTOMIZABLE SABER VALVE COVERS ONLY BY DELANY PRODUCTS

The Saber, Delany Products' top-of-the-line manual flush valve has always been beautiful, thanks to the scratch-resistant cover and sleek modern lines.

Now, custom engraved cover caps can show off the logo for a university, corporation or sports franchise.

Of course, inside it is still a Saber, a proven solution for many water hammer issues, and the only flush valve with instant in-field adjustability allowing for "True-in-the-Field Water Conservation". Saber valves also feature the Masherator Bypass - the market's only self-cleaning diaphragm that continuously cleans with every flush.

Contact your Delany Products sales rep today and start showing your team spirit!



The use of the logo is not authorized by, sponsored by, or associated with the trademark owner. Any order must be approved by the trademark owner in writing before production begins.



Whitehall's BestCare® ligature-resistant restroom fixtures and accessories are designed for the comfort, safety, and security of patients in behavioral healthcare environments. For new construction or renovation, BestCare is your complete solution.

Retrofittable Toilets • ADA Showers/Shower Valves • Sensor and Manual Faucets • Bariatric and ADA Sinks • Fire Extinguisher Cabinets • Bottle Fillers • Drains • Mirrors • Complete Room Accessories



Available through:
Albert Sterling & Associates
(713) 780-1600
www.albertsterling.com

Oslin Nation Co.

Hydronic and Plumbing Solutions Since 1943

The right brands, the right equipment,
the right experience to get your job done right.



WEIL
Pump
A WILO COMPANY

Bell & Gossett
a xylem brand



- Pumps
- Water Heaters
- Booster Systems
- Flexible Connections

1-800-293-2506 • www.onco-tx.com • sales@onco-tx.com

T&S IS HERE

**PUBLIC VENUES • EDUCATION
HEALTHCARE • COMMERCIAL OFFICES**

T&S is proud to be a trusted name across a wide range of markets — staying at the forefront of today's evolving industry and providing a vast selection of reliable solutions that meet required codes and compliances.

Learn more at tsbrass.com/markets.



Find us in
MASTERSPEC
building specs done right

T&S plumbing products represented in Houston by:
Stephen & Stephenson - 713-227-7254

Committee Members

Dave Cropper

Chapter Affiliate Liaison, Construction Industry Council

Francisco DeHoyos, CDP, FASPE

Society legislation committee co-chair, Society education committee member, Society long-range committee member Region 5 legislation representative, Houston Chapter Education Chair

Donald Taylor, CPD, GPD, FASPE

Board of Governors Chairman, Society Education Committee

Zed Hernandez

Webmaster, Newsletter Editor/ Social Media Director

Greg Salter / Jaime Cruz

Product Show Chair/ Co-chair

Curtis Dady

Region 5 Affiliate Liaison

Chris Ennis, CET

Chapter Social Director

Houston Amendments to the 2021 Uniform Plumbing Code



Adopted by Ord. No. 2023-907¹

Passed October 25, 2023²

Effective January 1, 2024³



¹. The City Secretary shall insert the number of the adopting ordinance.

². The City Secretary shall insert the date passage and approval of the adopting ordinance.

³. The City Secretary shall insert the effective date of the adopting ordinance.

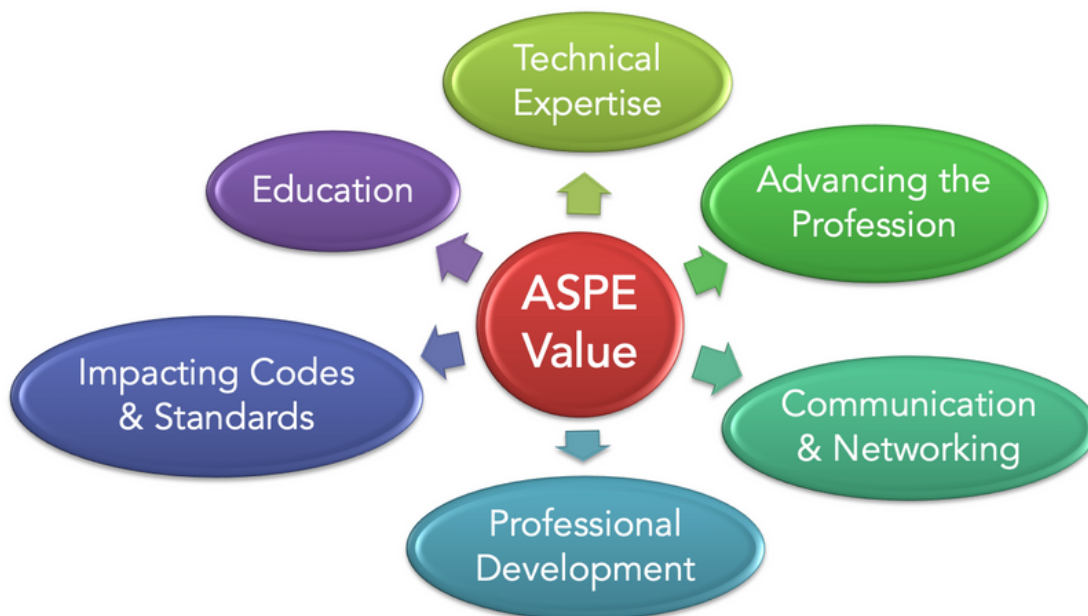


Connect with us
on Social Media!



ASPE Purpose

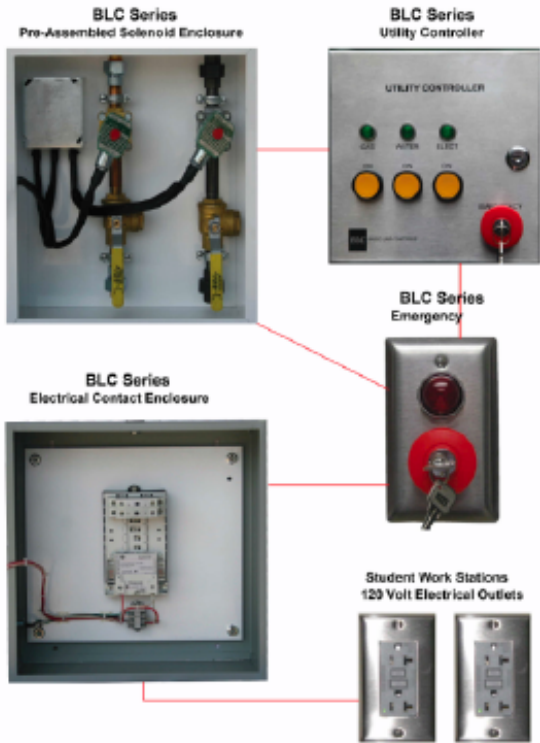
The core purpose of the American Society of Plumbing Engineers is to continually enhance and promote the profession of plumbing engineering design while assisting in improving the health, welfare, and safety of the public on a global scale.



BASIC LAB CONTROLS

BLC Series Science Classroom Safety System

UL Listed and Certified to UL 508-A
Manufactured and Assembled in Texas



**PIPE
PLACED HERE
PROTECTS
ROOFS.**



**MAPA
PRODUCTS**

www.mapaproducts.com

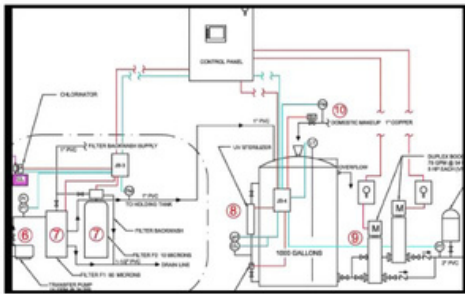
Innovative rooftop supports since 1998

MMA
MILLER MAYS & ASSOCIATES

713.690.7411



Wahaso provides complete design/ build water harvesting solutions services for Commercial projects



- Rainwater Systems
- Grey Water Systems
- Stormwater Systems
- Condensate Systems
- Multi-Source Systems
- Storage Systems



COUGAR★USA
The Lone Star in Water Control

14824 Tomball Parkway,
Suite 150
Houston TX 77086
832-912-7500

ISMET

Utility controllers for school science labs:
Keep students, teachers and facilities safe.



MMA
MILLER MAYS & ASSOCIATES
713.690.7411

The following are the current construction codes enforced by the City of Houston.

Code	Publisher	Effective Date
2015 International Residential Code (with Houston Amendments)	ICC	April 1, 2022
2015 International Building Code (with Houston Amendments)	ICC	April 1, 2022
2015 International Fire Code (with Houston Amendments)	ICC	April 1, 2022
2015 International Existing Building Code (with Houston Amendments)	ICC	April 1, 2022
2015 Uniform Mechanical Code (with Houston Amendments)	IAPMO	April 1, 2022
2015 Uniform Plumbing Code (with Houston Amendments)	IAPMO	April 1, 2022
2018 Swimming Pool and Spa Code (with Houston Amendments)	ICC	April 1, 2022
2020 National Electrical Code (State Mandated) • Administrative Code Provisions (Effective April 1, 2022)	NFPA	November 1, 2020
Sign Code (Chapter 46 of the Houston Building Code)	COH	July 29, 2020
2015 International Energy Conservation Code (with Houston Amendments) - <i>For One and Two-Family Dwellings and Multi-Family 3 stories or less.</i>	ICC	October 24, 2016*
2015 International Energy Conservation Code (with Houston Amendments) - <i>For Commercial Structures, including Residential Structures more than 3 stories</i>	ICC	December 9, 2016*
ASHRAE 90.1-2013 (with Houston Amendments) - <i>For Commercial Structures, including Residential Structures more than 3 stories</i>	ASHRAE	December 9, 2016*
2012 Code Words - various sections interpreted and administrative policies	COH	N/A

* The enforcement of Chapter 11 of the 2015 International Residential Code became mandatory by state law effective September 1, 2016. The enforcement of the 2015 IECC-Commercial Provisions became mandatory by state law effective November 1, 2016.

ICC International Code Council
500 New Jersey Avenue, NW
6th Floor, Washington, DC 20001
(888) 422-7233
<http://www.iccsafe.org>

IAPMO International Association of
Plumbing and Mechanical Officials
4755 E. Philadelphia St
Ontario, CA 91761
(909) 472-4100
<http://www.iapmo.org>

NFPA National Fire Protection Association
1 Batterymarch Park
Quincy, MA 02269
1 (800) 344-3555
<http://www.nfpa.org/>

ACCESSIBILITY

For regulations pertaining to Accessibility, please contact:

Texas Department of Licensing & Regulation
920 Colorado P.O. Box 12157
Austin, Texas 78711

Toll-Free (in Texas) 800-803-9202
Tel: (512) 539-5669
Fax: (512) 539-5690
TDD: (800) 735-2989
<https://www.tdlr.texas.gov/ab/abtas.htm>

The Houston Amendments to the Codes, the Sign Code, and 2012 Code Word can be downloaded at:
<https://www.houstonpermittingcenter.org/help/codes>



Plans review Contacts

Steve Spillman

Plan anylist Supervisor Plumbing

832-394-9174

Bobby Lewis

832-394-9175

Russell Logan

832-394-9176

Cassidy Spell

832-394-9524

Richard Warren

832-394- 9182